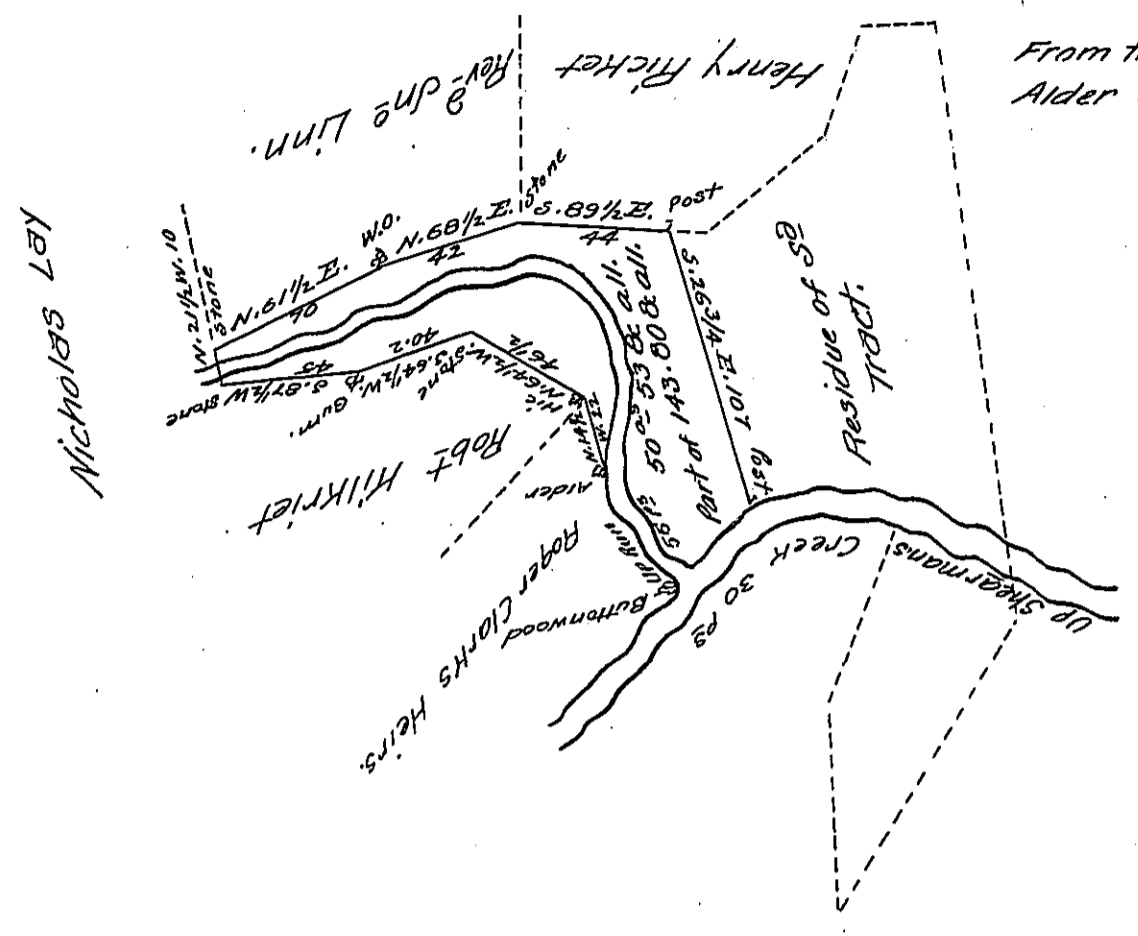


Course and Distance up Shearman's Creek
from the Post to the Butternood
S. 44 W. 30

From the Butternood to the
Alder up the run.
N. 52 W. 32
N. 40 W. 23
55 in all.



The Draught of a tract of Land situate partly in Tyrone & partly Tyboine Townships Cumberland County containing fifty acres & fifty three perches & allowance &c. It being part of a larger tract surveyed on a Warrant granted to Alexander Roddy Dated the 13th Day of May 1763 surveyed and Divided off for David Showers the 30th Day of April 1804

Wm Ramsey D.S.

To Sam^l Cochran, Esquire,
Surveyor Gen^l of Pennsylv^a.

IN TESTIMONY that the above is a copy of the original remaining on file in the Department of Internal Affairs of Pennsylvania, made conformably to an Act of Assembly approved the 16th day of February, 1833, I have hereunto set my Hand and caused the Seal of said Department to be affixed at Harrisburg, this thirteenth day of July 1906

Isaac P. Brown
Secretary of Internal Affairs.